

# ***Symbian Installation and operation instruction***

Mobile Device: Nokia, SonyEricsson...etc.

System requirement:

GPRS/ 3G must be provided from your telecom service.

Mobile device that supports GPRS/ 3G protocol and Java cldc1.0/midp 2.0 environment

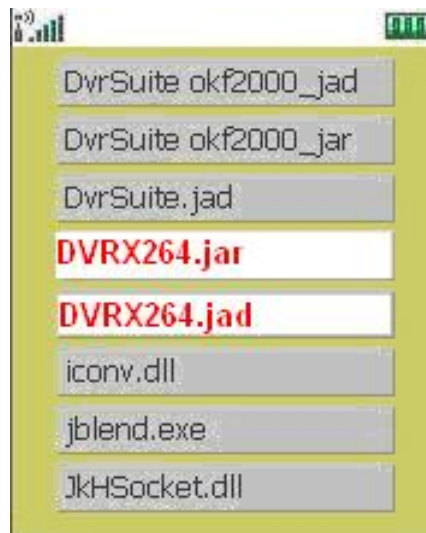
**\* Please download both "DVRX264.jar" and "DVRX264.jad" to operate the function.**

## ***1. Mobile Application Installation***

Please follow the steps cited below to perform the mobile device surveillance function.

Step 1: The mobile application called "**DVRX264.jar**" and "**DVRX264.jad**" need to be installed in your mobile device. The application can be transferred to your mobile device from the CD that packed with DVR through Bluetooth or USB cable.

Step 2: Install the application software "**DVRX264.jar**" in your mobile device. It might be installed automatically after downloading; otherwise, select it from the downloading file for installation.




## 2. Mobile Application Operation

After the installation, enter the Program Files menu in your mobile device to run a file called "DVRX264".

Select "Menu" at the right lower corner of your mobile screen, 4 commands, **Login Add Modify** and **Delete**, will show up.

### 2.1 Add New Login DVR

To log into the DVR, you need to enter the logging-in DVR information. Find "**Add**" under the "Menu" then enter logging-in DVR's IP address, Port number, account name and password. Press "**Add**" to save this information after entering.



**Edit Data**

IP: 60.250.134.116

PORT: 80

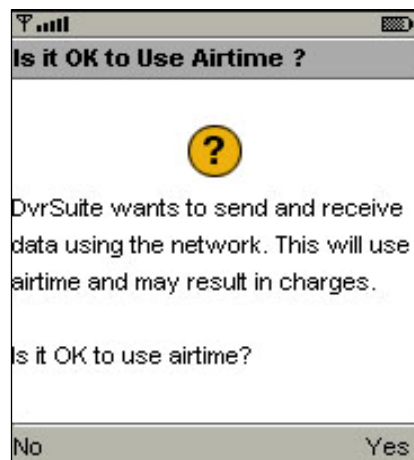
ACCOUNT: admin

PASSWORD: \*\*\*\*\*

Back OK

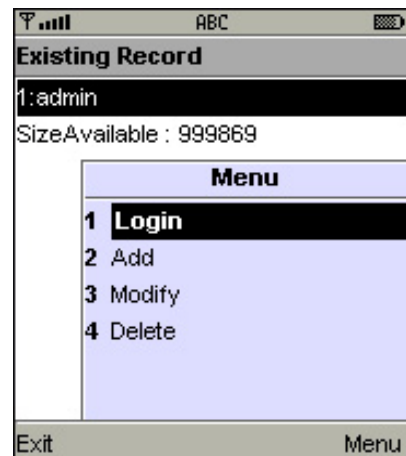
### 2.2 Logging Onto the DVR

Use the Login command to log onto a DVR and monitor live images. If multiple DVRs have been added to the mobile application, they will be listed by name, you can select one to log onto.

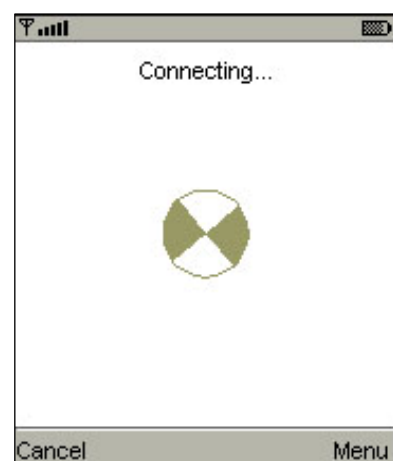


Network connectivity will take some time. It'll be affected by networking environment and bandwidth flow. Live image will show up after a successful connection.

**PS: Can view the channel content from the account settings and set the permissions.**

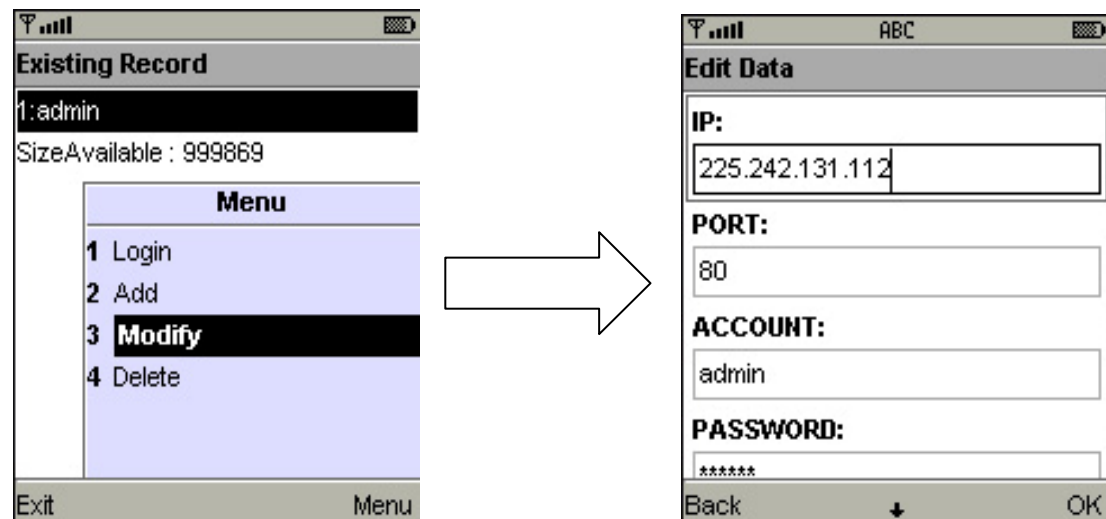


A confirmation message might show up for network charge before connection. The fee rate will depend on the telecom company and package fee you go with.



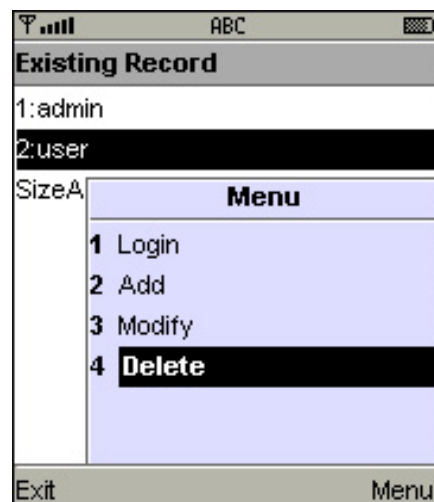
### 2.3 Modify the Login Information of DVR

You can use the “**Modify**” command to change the login information of DVR. The dialogue is identical to that of the “Add” command.



### 2.4 Delete the Login Information of DVR

“**Delete**” command can be used to remove the DVR information if it is no longer useful. Select the DVR on the name list then choose “**Delete**”



## 3. Live Monitoring Operation

This paragraph describes some operation under the LIVE monitoring mode in your mobile device.

### 3.1 Scroll the Image

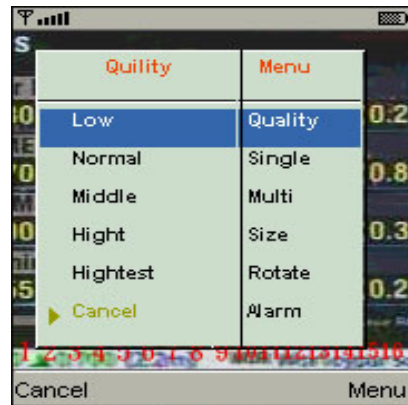
You can use the keypad on your mobile device to scroll the image if it's oversized.

| Key | Action       |
|-----|--------------|
| 2   | Scroll Up    |
| 4   | Scroll Left  |
| 6   | Scroll Right |
| 8   | Scroll Down  |

### 3.2 Image Quality Setup



Select “**Quality**” under the “Menu”

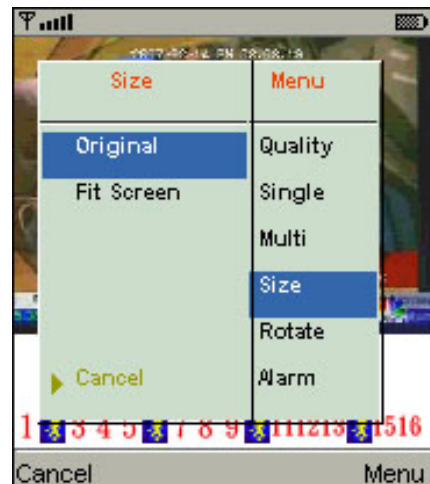


There will be 5 levels for your to choose: **Low** 、**Normal** 、**Middle** 、**High** and **Highest**.

### 3.3 Channel Display



Select “**Single**” under the “Menu”, there will be all channels of your DVR in list for you to choose.



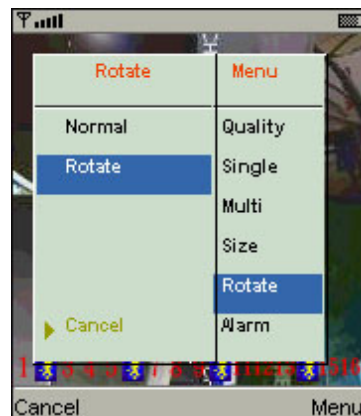
### 3.4 Size of Image

The screen size of different mobile device can be different. You can select “**Size**” under the “Menu” to choose from “**Original**” or “**Fit Screen**” to resize the display image.

| Item       | Description                                |
|------------|--|
| Original   | The image will be shown in original size.  |
| Fit Screen | The image will be shown to fit the screen. |

### 3.5 Rotate the image

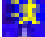


The Live image can be displayed in normal or rotate to 90 degrees. Select “**Rotate**” under the “Menu” for this operation.



### 3.6 Alarm

This application not only allows you to remotely monitor through mobile device but receive the alarm that has been triggered by events such as Motion Detected, Sensor Triggered and Vloss.

Graphical icons below will be shown on the status:

-  : Motion detected
-  : Sensor triggered
-  : Video loss

Select the “**Alarm**” under the “Menu” to switch this function on or off.

